



Frederick Engineering, Inc.  
832 Oregon Avenue, Suite M  
Linthicum, MD 21090  
(P) 410-789-7890  
(F) 410-789-7670  
e-Mail: fe@fetest.com

# WanXL Version 1.30

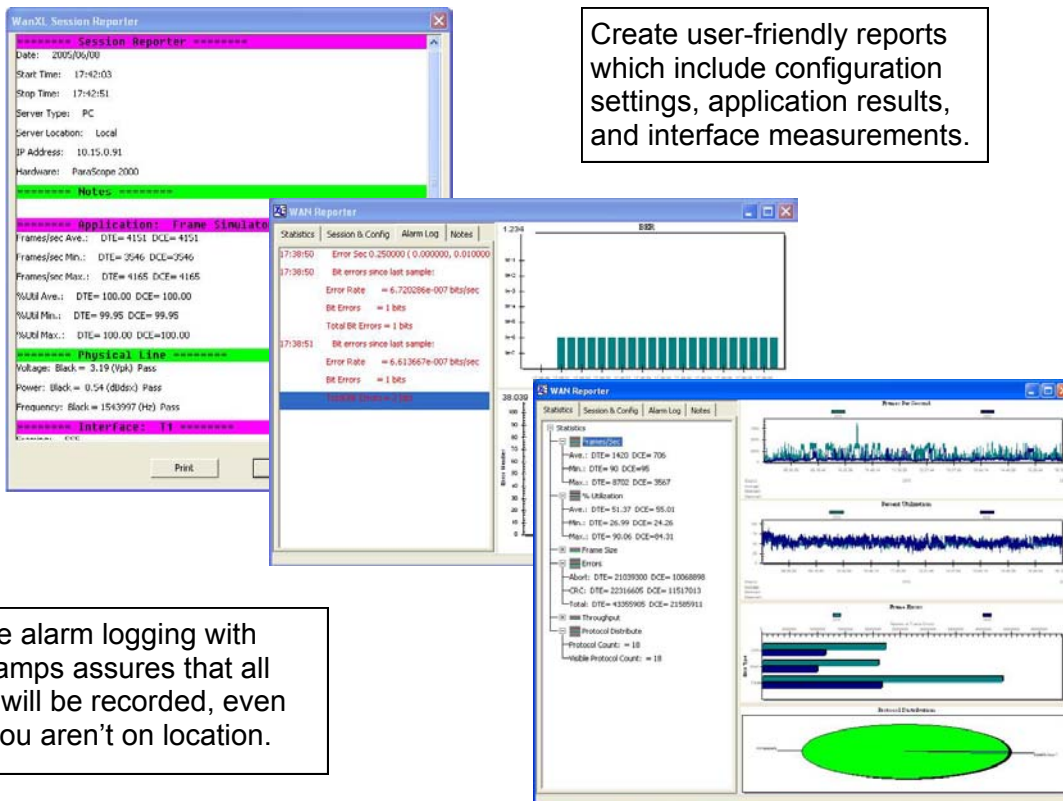
## Release Notes

### WanXL Reporter

This new version is only available with the purchase of WanXL Software Suite/Maintenance, and current maintenance subscriptions.

The *New Reporter* broadens any ParaScope solution by providing every level of management with the information needed to do the job. Reporter works in unison with any ParaScope hardware to provide detailed reports of WanXL or analysis sessions performed in the field. In addition, it uses data exported from the ParaScope (remote or local) to generate cumulative reports of an entire day of work or of a specific site profile.

CIO's and Directors can access summary reports, which illustrate overall network health and policy compliance. For IT staff, Reporter provides a customizable tool that exposes potential issues and trouble spots, which can be missed by traditional analysis.



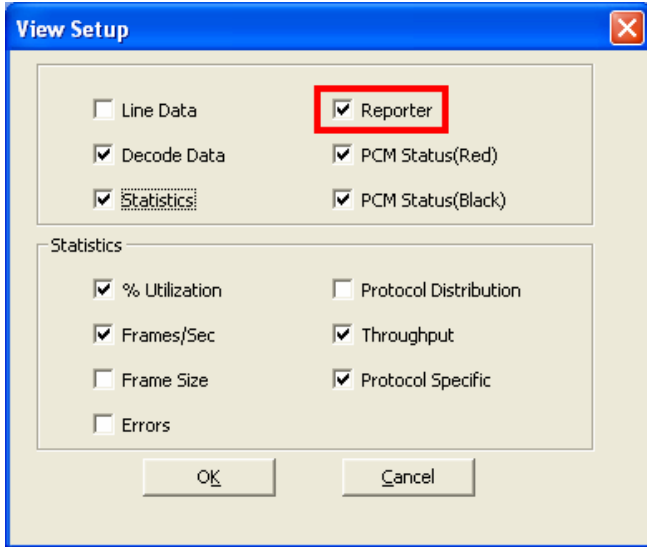
Create user-friendly reports which include configuration settings, application results, and interface measurements.

Concise alarm logging with time stamps assures that all events will be recorded, even when you aren't on location.

# WanXL Instructions

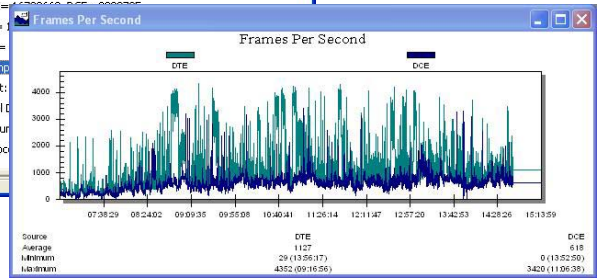
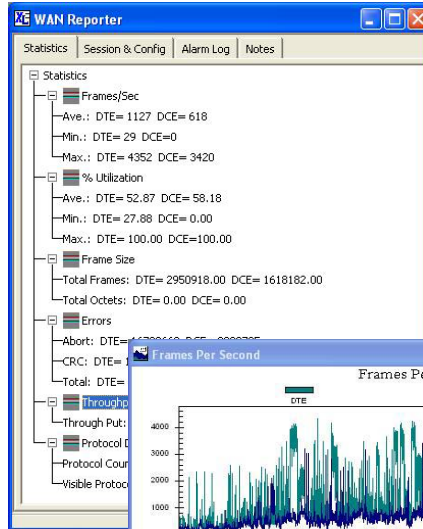
## Setup Reporter

Before running any applications, you need to enable the Reporter view. To do so, pull down the Setup menu and select View to display the View Setup dialog. You can also launch this dialog from the main tool bar button.



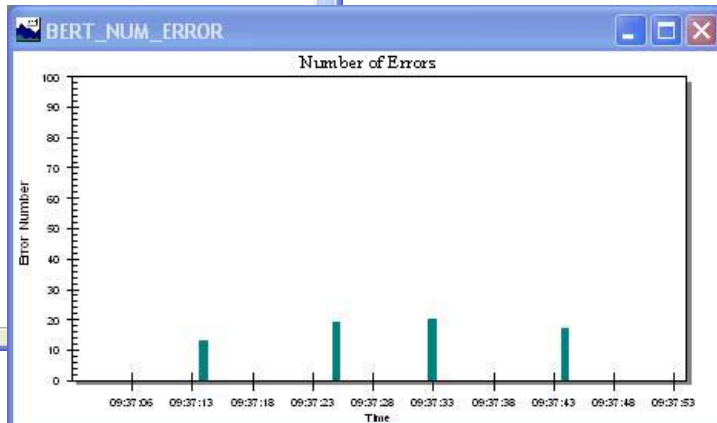
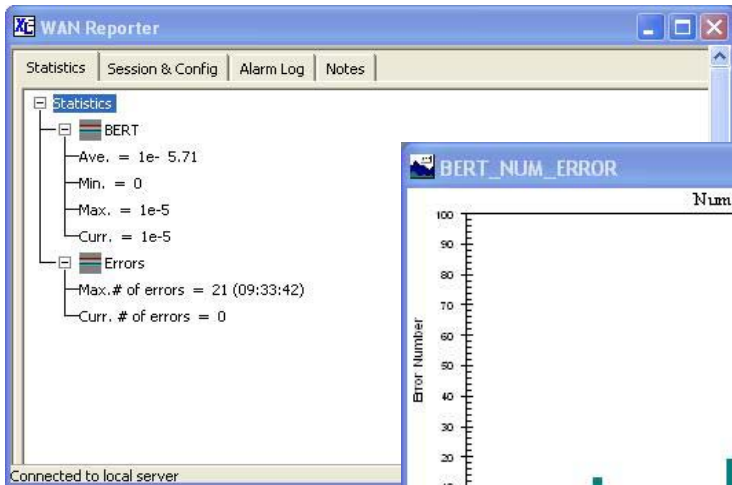
## Real-time Reporting for Monitor and Simulator Applications

Once enabled, the Reporter window displays when you run the Line Monitor, Line Simulator and Frame Simulator applications. It consists of four "tabbed" windows as shown below. Any statistical graphs are displayed independently of the Reporter window.



## Real-time Reporting for BERT

Once enabled, the Reporter window displays when you run the BERT application. It consists of four "tabbed" windows as shown below. Any statistical graphs are displayed independently of the Reporter window.

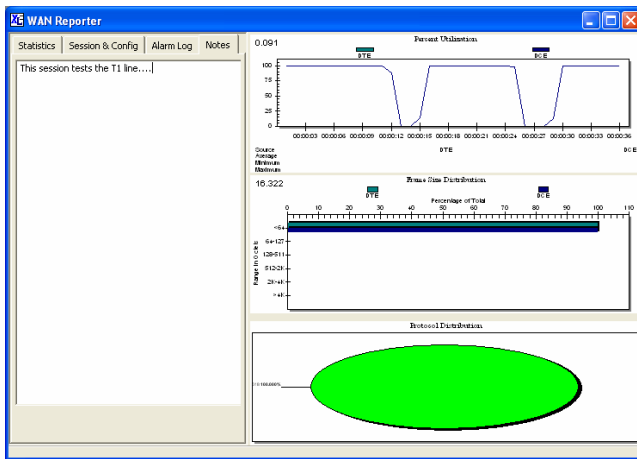


# WanXL Instructions

## Continued. . .

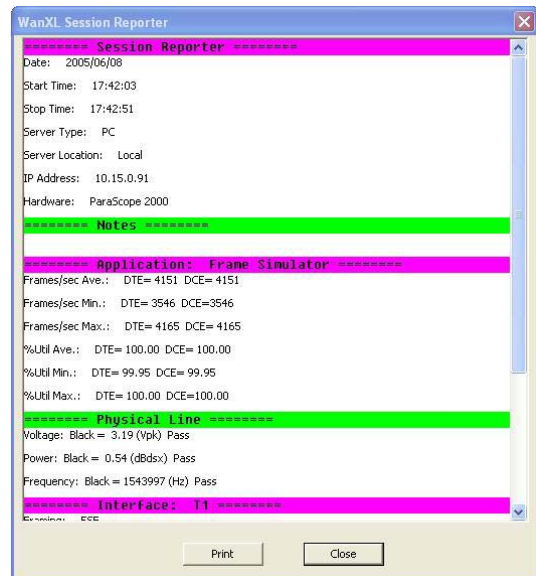
### Examine Reports

After a WanXL session is finished, the captured data and results can be saved for further review. Captured data must be saved as a \*.buf file and bit error rate results must be saved as a \*.ber file. When the Examine application is run, the Reporter window displays. It consists of four "tabbed" windows and statistical graphs as shown below.



### Print Results

Once you have captured and saved an application session with the Reporter enabled, the Session Reporter print button is available on the main tool bar. Click on this button to display and print the entire session results as shown below.



[www.fetest.com](http://www.fetest.com)