



AIRMAGNET[®] Planner

Professional WLAN Design and Modeling

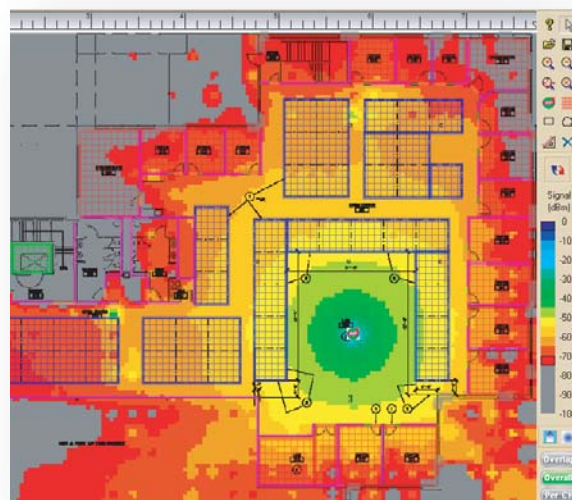
AirMagnet™ Planner takes the guess-work out of WLAN design and installation, making it easy for network professionals to accurately plan and deploy 802.11 based wireless networks in any indoor environment. The AirMagnet Planner accounts for building materials, obstructions, access point configurations, antenna patterns, and a host of other variables to provide a reliable predictive map of Wi-Fi signal and performance.

With AirMagnet Planner, network professionals can:

- *Properly size new wireless deployments for any environment or location*
- *Build detailed indoor RF models based on building materials and environment*
- *Create WLAN installation plans including all AP deployment and configuration options*
- *Model any antenna and preview the impact to your WLAN*
- *Ensure complete RF signal coverage while minimizing signal leak into unsecured areas*
- *Analyze total predictive co-channel interference for any AP*
- *Use seamlessly in conjunction with AirMagnet Survey for complete wireless modeling, deployment and optimization*

Great Networks Start With Great Design

An accurate network plan can be the most critical step of a successful wireless deployment. An unscientific plan can lead to vastly over-spending on network infrastructure or alternatively to underserved and unhappy end-users. The AirMagnet Planner removes the need for guess-work and lets installers determine the correct quantity, placement and configuration of APs required to deliver full coverage for end-users while minimizes signal bleed into unsecured areas. Users can preview the network by channel or SSID ensuring the network conforms to any specification.



AirMagnet Planner

Wi-Fi Tailored to Your Environment

AirMagnet Planner makes it easy to build a detailed model of any wireless environment, even before the network is deployed. Simply load in a map of the location, and use the built-in library of walls, doors and windows to precisely match the building's characteristics. The environment can be further customized to account for cubicles, offices, elevators and a variety of warehouse obstructions. All environmental settings are fully customizable and custom materials can be created from scratch to meet your specifications.



Contact FE for AirMagnet products
1-888-866-9001
fe@fetest.com

Build Your Network

AirMagnet Planner provides full control of the proposed wireless infrastructure. Users can add APs to any location and experiment to find the ideal AP placement for the environment. Planner also provides full control over all AP settings with independent settings for 11a and 11b/g radios. Users can set the AP channel, IP address, transmit power, antenna type, orientation and height. When the planning session is complete, users can generate a professional report with all the information needed to properly install the network, complete with a list of required APs, their ideal placement and configuration settings.

Custom Antenna Design

AirMagnet Planner includes over 90 of the most popular antennas on the market for customizing your APs. However, the solution also includes a built-in tool to create customized antenna patterns, allowing users to replicate the characteristics of literally any antenna on the market.

Minimize Interference

A true Wi-Fi plan requires an intelligent channel plan to ensure that APs in the same area don't overlap or interfere with one another. AirMagnet Planner includes an Overlap feature to show where APs on the same channel overlap above a user-defined threshold. Users can also investigate any AP in detail to plot the total combined interference to a particular access point from all other Wi-Fi sources.

Broad Map Support

AirMagnet Planner makes it easy to get started designing your network with support for a broad set of map types including BMP, DWG, DIB, DXF, EMF, GIF, JPG, WMF.

Integration with AirMagnet Survey

AirMagnet Planner easily integrates with AirMagnet Survey and Survey PRO, providing a single, seamless application with the industry's most complete approach to wireless LAN design, deployment and ongoing optimization. With AirMagnet Survey, users directly measure real-world RF values and client performance statistics. By using Planner and Survey together, users can continually improve the quality of their wireless models by comparing actual RF loss values against the planned values. Survey PRO users also gain additional planning capabilities with the ability to test network plans against the AirWISE engine and Multi-View which lets users directly compare predicted and actual survey results.

Product Facts

AirMagnet Planner (Stand-alone)

Product Number: A4012

AirMagnet Planner (Integrated with AirMagnet Survey)

Product Number: A4013

AirMagnet Survey (optional)

Product Number: A4010

AirMagnet Survey PRO (optional)

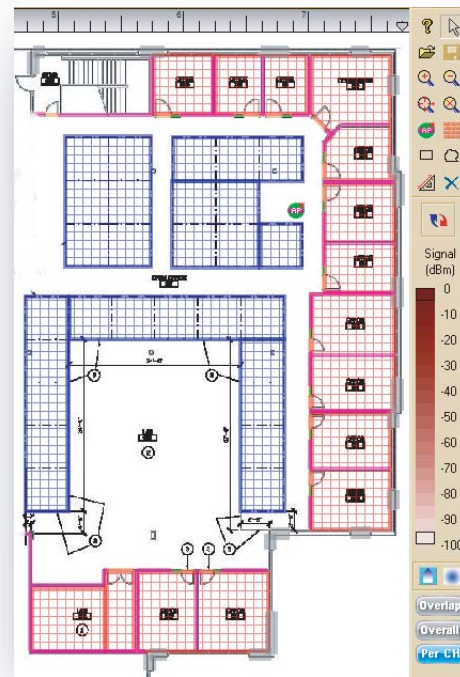
Product Number: A4015

AirMagnet Spectrum Analyzer

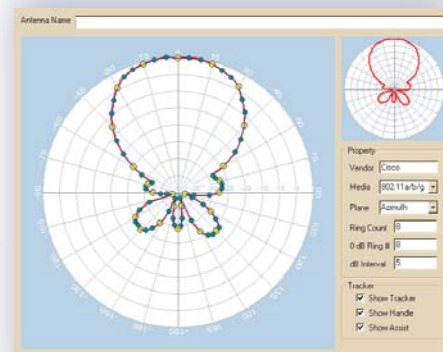
Product Number: A4030

Minimum System Requirements:

- Microsoft Windows 2000 or XP
- Intel Pentium III (1.6 GHz) or Higher
- 512 MB Memory
- 1 GB Hard Disk Space
- Supported Wireless Adapter (see <http://www.airmagnet.com/products/cards.htm> for details)
- AirMagnet Survey version 4.0 or later (Required only for A4013)



Model Any Environment



Create a Custom Antenna



To order AirMagnet products, or for more information about the company, contact us at 408-400-0200 or http://www.airmagnet.com/company/contact_airmagnet.php?type=sales

AirMagnet, Inc.
1325 Chesapeake Terrace
Sunnyvale, CA 94089
www.AirMagnet.com

EMEA Headquarters
St Mary's Court The Broadway
Amersham
Buckinghamshire, HP7 0UT
United Kingdom