

Palm OTDR OT-8600

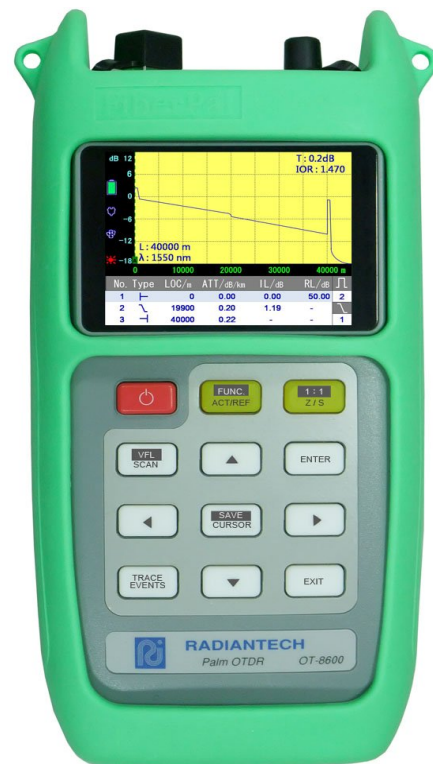
Optical Time Domain Reflectometer

The Palm OTDR (OT-8600) is a new miniature, high performance optical time domain reflectometer which is designed as fiber troubleshooter for locating fiber connector, break and imperfections for access networks. It detects event locations along the optical fiber and displays the results on a color LCD display. This Palm OTDR is light, reliable and easy to use, hence it is ideal for FTTX testing.

The Application Software equipped is used for data analysis, processing and storage. With the USB Interface port, enabling OT-8600 to transfer test data to computer easily.

Main Features

- Light, Compact, Cost-effective, Portable and Reliable
- Identifying the reflective and non-reflective type faults
- 3.2" TFT-LCD color display with LED backlight
- Work with four AA Size Alkaline Batteries
- PC Software for analysis and test report generation under Windows 2000/XP
- USB interface for data transfer
- Built-in Visual Fault Locator with on screen indicator
- On screen battery indicator with low battery alerts
- Supports external SD memory card



Applications

- Optical insertion loss measurement
- Fiber fault event(s) locating
- Fiber event(s) identification
- Fiber length measurement
- Monitoring system for data measurement
- Fiber types identification

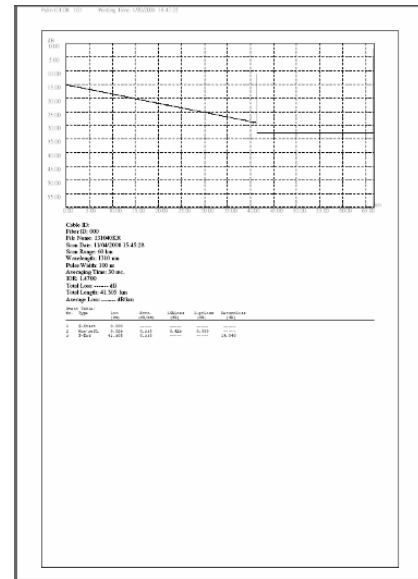
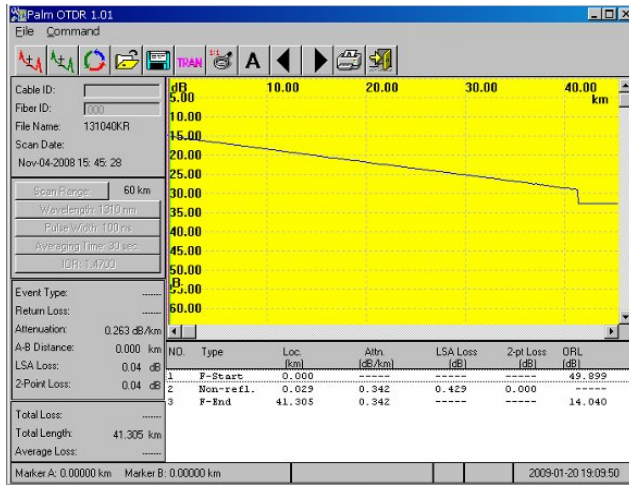
Frederick Engineering, Inc.
832 Oregon Avenue, Suite M
Linthicum, MD 21090



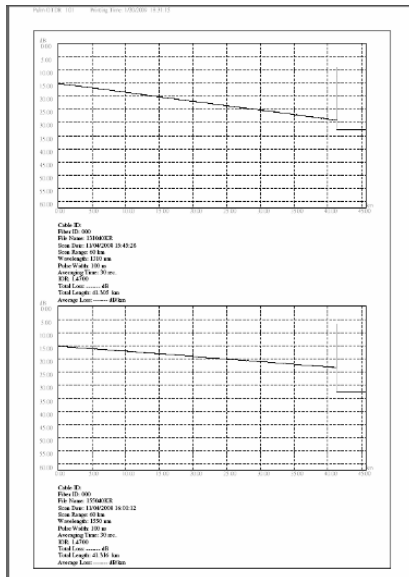
www.fetest.com

Phone: 410-789-7890
Fax: 410-789-7670
e-Mail: fe@fetest.com

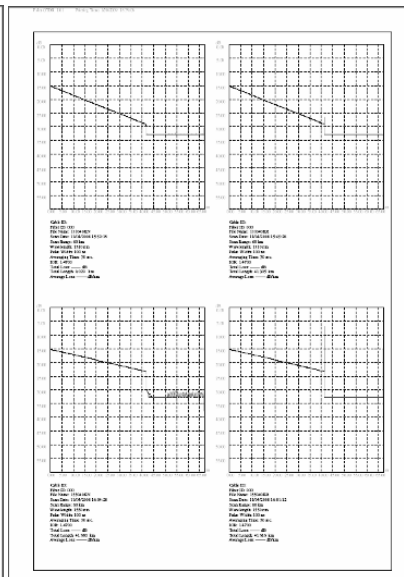
PC Software Screen and Report Format Sample



Single trace with event table



Two traces



Four traces

NO.	Type	Loc (km)	Altn (dB/km)	LSA Loss (dB)	2-pt Loss (dB)	ORL (dB)
1	F-Start	0.000	-----	-----	-----	49.899
2	Non-refl.	0.029	0.342	0.429	0.000	-----
3	F-End	41.305	0.342	-----	-----	14.040

Additional event table for comparison

Frederick Engineering, Inc.
832 Oregon Avenue, Suite M
Linthicum, MD 21090



www.fetest.com

Phone: 410-789-7890
Fax: 410-789-7670
e-Mail: fe@fetest.com

Specifications

Item \ Model		OT-8630
Wavelength		1310 / 1550 +/- 20 nm
Dynamic Range (typ.) ²	dB	10 / 11
Measurement Range	km	20
Fiber Under Test ³		9/125 μ m Single Mode Fiber
Measuring Time / Each Time		< 30 Sec ⁴
Pulse Width		Auto Setting
Event Dead Zone ⁵		< 5 m
Attenuation Dead Zone ⁶		< 20 m
Power Supply		4 AA Size 1.5V Batteries or 5V/2A AC-DC adaptor
Distance Accuracy (Reflective Event Detection)		+/- (2 m + 2×10^{-5} x Distance + Marker Resolution)
Loss Accuracy		+/- 0.1 dB/dB
Return Loss Accuracy		+/- 4 dB
Number of Trace Storage ⁷		> 5000 traces
Communication Port		USB
Visual Fault Locator (Wavelength / Power / Modulation)		650 nm / - 3 dBm / 1 Hz

Remarks:

1. All specifications are subject to change without notice.
2. SNR = 1
3. Test with Corning SMF-28.
4. Tested under Easy-scan Mode with 1 km SM fiber.
5. Reflective type connection could be normal adaptive connectors, normal mechanical splice connections or high return loss fiber breakage faults.
6. Non-Reflective type connection could be fusion splice connection or excessive bending point or fiber breakage faults.
7. Up to 5000 traces with 1 GB SD memory card.

Frederick Engineering, Inc.
832 Oregon Avenue, Suite M
Linthicum, MD 21090



Phone: 410-789-7890
Fax: 410-789-7670
e-Mail: fe@fetest.com

www.fetest.com

Specifications

Dimensions	227 (L) x 117 (W) x 50 (H) mm (with bumper)
Weight	< 850 g
Temperature	Operating: 0 to +50oC Storage: -20 to +60oC
Humidity	5 to 95 % (non condensing)
Adaptor	SC or FC (optional)

Accessories

- One power adaptor (AC 110-240V / DC 5V 2A)
- One rugged carrying suitcase
- One USB cable
- One strap
- Four AA size 1.5V Alkaline batteries
- One instruction manual
- One calibration certificate
- One software CD

Ordering Information

Wavelength (X)	Measurement Range (Y)
1 = 1310 nm 2 = 1550 nm 3 = 1310 / 1550 nm	0 = 20 km 8 = 40 km
Example of Ordering statement: OT-86XY e.g. : OT- 8638 = One of OT-8600 series products with wavelength of dual bands of 1310 nm and 1550 nm and measurement range of 40km . (The number of blue color is optional based on customers' needs. Please refer to details of the Ordering Information above)	

Frederick Engineering, Inc.
832 Oregon Avenue, Suite M
Linthicum, MD 21090



www.fetest.com

Phone: 410-789-7890
Fax: 410-789-7670
e-Mail: fe@fetest.com