

WanXL-AsyncCom

Software-based async test/analyzer solution for RS-232 interfaces.

Product Features

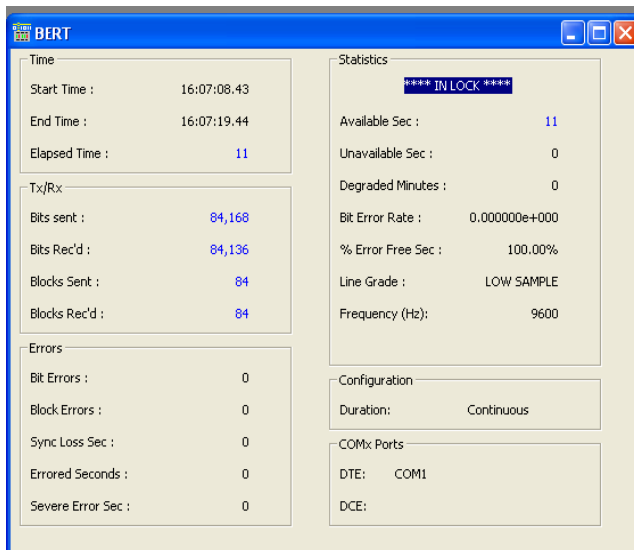
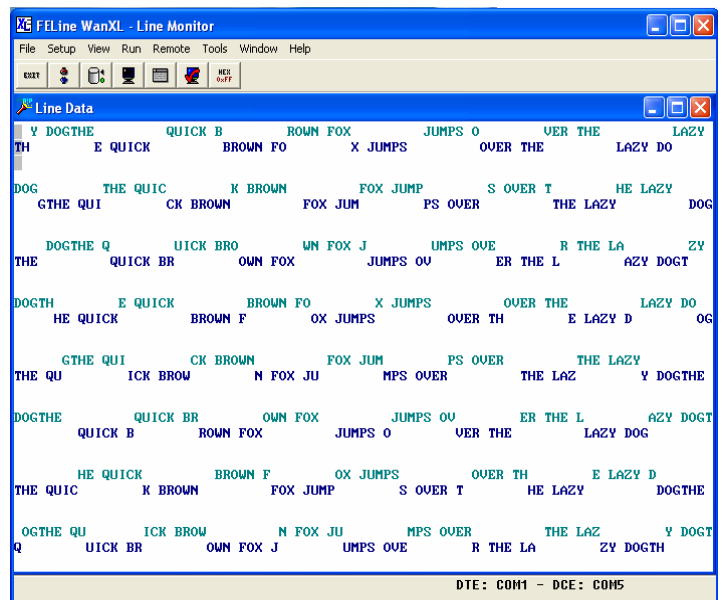
- Full-featured data monitor;
- Generate user-defined data streams;
- Protocol analyzer decodes Async PPP, SLIP and TCP/IP;
- Runs bit error rate test set;
- Easily creates quick-launch icons for your custom created test/analyzer configurations; quick launch icons are stored in a file for easy distribution; and
- Software breakouts for RTS, CTS, DSR, and DTR indicates a "mark" or active state.

Comprehensive Bit Error Rate Testing


Simultaneously measures bit errors, block errors, errored seconds, percent errored seconds, and more on asynchronous lines.

Passive Data Monitoring and Active Simulation

Analyze and test internetworking protocols (PPP, SLIP and TCP/IP) and raw data at speeds up to 115.2 Kbps. Generate user-defined streams..



www.fetest.com



WanXL-AsyncCom

Software-based async test/analyzer solution for RS-232 interfaces.

Product Overview

WanXL-AsyncCom is a component of the ParaScope family of data communication protocol analyzers and testers, each of which operates with the world proven WanXL software. WanXL considerably decreases the time required to search hex dumps by presenting data in a highly organized, easy to read format. Users can quickly locate errors, bit shifts, and measure response time.

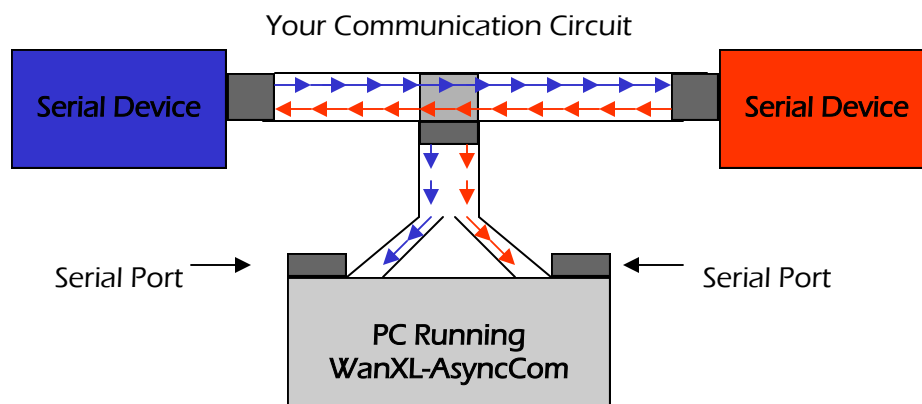
WanXL-AsyncCom runs on any Windows 95/98/Me/NT/2000/XP compatible PC. The custom RS-232 cable set (included with the product) connects the host PC, via one or two serial ports (two ports are required for bi-directional analysis), with the circuit under test. RS-422, RS-485, RS-530, and other specialized interfaces are supported through the use of optional converters.

WanXL-AsyncCom is an essential test tool for data communication product developers, network integrators, network troubleshooters and field service technicians. The protocol analyzer enables:

- shorter and less costly development intervals for data communication equipment and applications;
- faster and more efficient network installations; and
- reduced time to repair equipment and network outages.

How WanXL-AsyncCom Taps the Circuit

To interface with a serial communication link, connect the serial ports of the PC running the WanXL-AsyncCom software to the custom cable provided.





WanXL-AsyncCom

Software-based async test/analyzer solution for RS-232 interfaces.

Hardware Specifications

PC Requirements - Pentium with minimum 16 MB Ram and VGA or SVGA monitor. Connects via serial or USB port. Operates with WanXL Software using Windows 2000/95/98 and NT.

Line Interfaces - Supports Asynchronous RS-232 only.

Software LEDs - RTS, CTS, DSR, and DTR indicates a "mark" or active state.

Capture Buffer - Utilizes PC's extended memory. Size is user defined.

Data Rate (max.) - Up to 115.2 Kbps.

General Specifications

Monitoring - Monitor DTE and DCE devices.

Simulation - Simulate DTE or DCE. device.

Data Line Analysis - Real time or post processing

Protocols - Async, Async PPP, and SLIP.

String Simulator - Traffic generator with user-defined % utilization, transmit period and idle period. Supports user-defined strings and canned messages.

Time Stamping - User may select to time stamp characters received, frames received, or lead transitions. Select absolute time of day or time relative for time-stamp display format.

Search/Display Filter - User selectable search for time-stamp, frame length, error, display text, capture data or protocol-specific information.

Character Suppression - Allows elimination of characters, such as idle, sync or user-definable characters from the display.

Send String - Up to 1,024 characters per string.

Display Screen - Windowing technology, includes: move, size, minimize, maximize, tile cascade, and arrange.

General Specifications—Con't.

Line Data Display - Chronological order of DTE/DCE data, lead states, and triggers. Display can be synchronized to Decode Display windows. Supports both CHAR and HEX display formats.

Data Codes - ASCII, EBCDIC, Six Bit Transcode, IPARS (Line and Sabre), Inverted IPARS, HEX, and EBCD.

Bit Sense - Normal or inverted.

Bit Order - MSB or LSB first.


Error Checking - CRC-CCITT, CRC-16, CRC-12, CRC-6, LRC, and Parity.

Parity - Odd, Even, and None.

Decode Data Display - DTE/DCE single and encapsulated protocols. Summary I, II, and Detail windows offer increasing levels of decode information. Protocol Summary decomposes each frame by protocol type. Windows can be duplicated and synchronized to each other and to the Line Data Display window.

Character Framing - 5, 6, 7 or 8 information bits, plus parity. For asynchronous systems: 1, 1.5, or 2 stop bits per character.

Printer Support - Standard printer support for generating a hardcopy of the data status and timing information (all data, DTE only, DCE only, DCE and DTE), analysis, programs, and setups.

The logo graphic consists of a vertical black line on the left. To its left are three overlapping squares: a red one at the top, a yellow one in the middle, and a light red one at the bottom. To the right of the vertical line, the text "WanXL-AsyncCom" is written in a large, black, serif font.

WanXL-AsyncCom

Software-based async test/analyzer solution for
RS-232 interfaces.

BERT Specifications

Measurements - Simultaneously measures bit errors, block error, errored seconds and percent error free seconds for synchronous and asynchronous data lines.

Patterns - 63, 511, 2047, 4095, Alt 1/0, Mark, Space, ASCII FOX, Alt ASCII FOX, EBCDIC FOX, Alt EBCDIC FOX, and User-Defined..

Presentation - Displays G.821 and bit/block errors.

Character Framing - Select Sync or Async 5, 6, 7 or 8 bits per character sequence.

Error Injection - Injects single or user-defined error rate.

Flow Control - Select None, Leads, or XON/XOFF.

WanXL-AsyncCom Includes

- product software;
- a Quick Start Guide;
- USB to serial port adapter; and
- a custom RS-232 cable set.

Warranty

Hardware - All FE products are backed by our 1-year hardware parts and labor warranty. Ask about our optional 5-year *Extended Warranty Plan*.

Software - FE's WanXL-AsyncCom Software includes the FE Customer-First Upgrade Program. Ask about our optional 1-year and 3-year *Software Subscription Plans*.

Frederick Engineering, Inc.
832 Oregon Avenue, Suite M
Linthicum, MD 21090
USA



Phone: 410-789-7890
Fax: 410-789-7670
E-mail: fe@fetest.com
www.fetest.com