



AIRMAGNET[®] Survey

Fast Scientific Site Surveys

AirMagnet™ Survey delivers fast, scientifically accurate site surveys for any 802.11a/b/g wireless network. This revolutionary software automatically gathers critical Wi-Fi and RF information from your network using multiple data collection methods and generates detailed Wi-Fi performance maps of the results for easy network deployment, capacity planning and optimization.

With AirMagnet Survey, network professionals can:

- *Identify Coverage Areas and Dead Spots*
- *Set Ideal AP Placement and Power Settings*
- *Identify Areas of RF Interference and Noise*
- *Identify Client Roaming Areas*
- *Measure True End-User Experience in Terms of Connection Speed, Retry Rate, and Packet Loss*
- *Plan for End-User Capacity*
- *Simulate Network Changes for Ongoing WLAN Optimization*
- *Use With Optional AirMagnet Planner Software for WLAN Design and Modeling*

Real World Performance

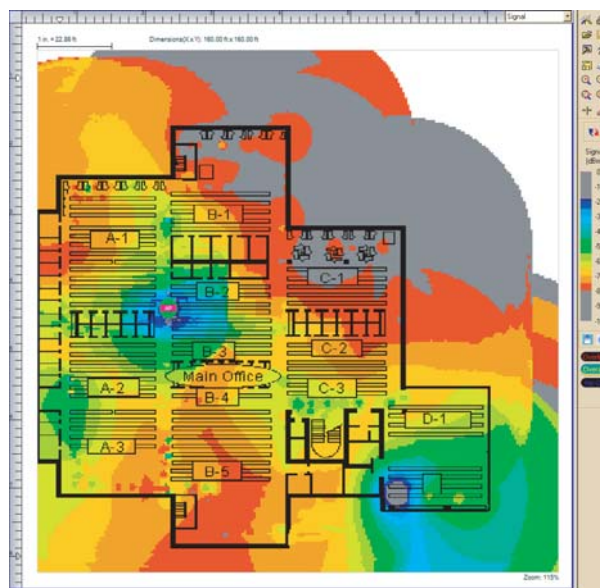
Unlike other solutions that rely only on passively collected data such as signal strength, AirMagnet also collects active survey data to ensure a superior site survey. During an active survey, AirMagnet actually associates to an AP to test the real quality of the connection. This allows surveyors to see exactly how real world clients will perform at specific locations in terms of connection speed, retry rates, and packet loss.

Unmatched Analysis

AirMagnet Survey automatically displays survey results on a map of your location, providing unlimited options for visual analysis.

Complete View of Wireless Statistics - View the distribution of Signal, Noise, Signal/Noise, Frame Speeds, Retry Rates, and Packet Loss.

Interference Analysis - Measure the total cumulative interference from all sources that can impact the performance of your APs.



AirMagnet Survey Signal Analysis

View by Channel, SSID, or Device - Sort results based on SSID or channel to easily balance RF issues against VLAN and service level requirements.

Overlap and Roaming Analysis- Instantly see areas of over-provisioning or where clients are prone to consistent roaming or "thrashing" between APs.

Simulation and Optimization

After a survey, users can simulate a variety of changes to the network and preview the impacts. This includes changing AP Transmit Power, Channel, SSID, and even added environmental noise. Users can simulate moving APs to new locations and preview the effect of adding additional APs. Survey can also automatically recommend a channel plan for your APs that avoids interference and over-allocation.



Contact FE for AirMagnet products
1-888-866-9001
fe@fetest.com

Active Tools

Survey includes a suite of utilities to actively test the network and pinpoint problems, including a signal test tool to identify potential multipath interference, Ping, DHCP tools, and a library of wireless calculators.

Broad Map Support

AirMagnet Survey supports a broad set of map types including BMP, DWG, DIB, DXF, EMF, GIF, JPG, WMF.

Integration with AirMagnet Planner

AirMagnet's predictive Planner product (sold separately) seamlessly integrates into AirMagnet Survey. AirMagnet Planner lets users design predictive models of their wireless networks based on building materials, indoor obstructions, antenna types, AP configurations and much more. With this integrated solution, users can accurately design their WLANs and then validate the results with real-world data, allowing users to further perfect their planning models over time.

AirMagnet Survey PRO

AirMagnet Survey PRO is a separate version of the Survey software containing all the functionality of the standard version plus an additional set of features tailored to the needs of the wireless expert. Additional features include:

Integration with AirMagnet Spectrum Analyzer

Users who own the AirMagnet Spectrum Analyzer can collect both Wi-Fi and spectrum analysis data in a single survey. This lets users see the physical spectrum at any particular location, and even automatically identify and display the presence of non-802.11 devices that are interfering with the WLAN.

Professional Reporting

Survey PRO includes a completely integrated reporting module that can instantly create custom outputs of your site surveys and simulations. Reports include coverage and interference assessments of every channel, SSID, and AP. Reports can be output in over 15 formats including PDF, XML, HTML, Microsoft Excel and Microsoft Word.

Multi-Project Views

Survey PRO provides the ability to analyze up to 4 separate projects simultaneously. Users can load multiple floors of a single building to see if AP signals are bleeding to adjacent floors. Likewise, users can use this feature to quickly compare Planner results with actual Survey results.

AirWISE® for Site Surveys

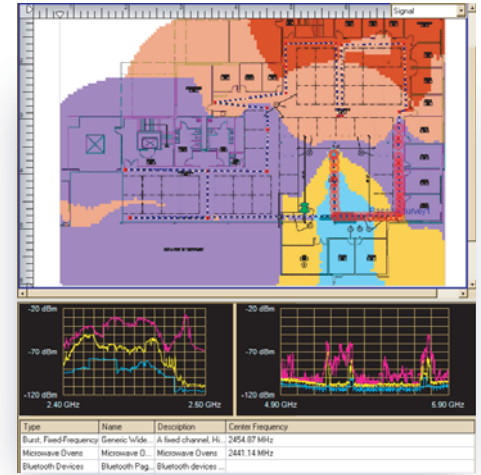
The AirWISE engine lets users set design requirements for their network and immediately identify any problem areas. Users can quickly test the network against a variety of criteria and get expert advice on how to resolve any problems.

Capacity Planning

AirWISE also includes a capacity planning section that allows surveyors to account for the number of end users the WLAN will need to support. With this tool users can easily verify that the network will have enough APs to meet the bandwidth and throughput needs of end users.

Outdoor Surveys

With the combination of GPS support, 4.9 GHz support and integration with Google Earth and Microsoft MapPoint, AirMagnet Survey PRO provides a clear path to fast, fully automated outdoor surveys. Users can leverage their NMEA compliant GPS device to automatically collect outdoor wireless data. The results can then be analyzed in the AirMagnet user interface or exported into Google Earth.



Spectrum Analysis Integration
(PRO version only)

Product Facts

AirMagnet Survey

Product Number: A4010

AirMagnet Survey PRO

Product Number: A4015

AirMagnet Planner (optional)

Product Number: A4013

AirMagnet Spectrum Analyzer (optional)

Product Number: A4030

Minimum System Requirements:

- Microsoft Windows 2000 or XP
- Intel Pentium III (1.6 GHz) or Higher
- 512 MB Memory
- 1 GB Hard Disk Space
- Supported Wireless Adapter (see <http://www.airmagnet.com/products/cards.htm> for details)

To order AirMagnet products, or for more information about the company, contact us at 408-400-0200 or http://www.airmagnet.com/company/contact_airmagnet.php?type=sales

AirMagnet, Inc.
1325 Chesapeake Terrace
Sunnyvale, CA 94089
www.AirMagnet.com

EMEA Headquarters
St Mary's Court The Broadway
Amersham
Buckinghamshire, HP7 0UT
United Kingdom