

# GigE Reflector

## *Remote Loopback Device for Ethernet Networks*

The GigE Reflector provides loopback functionality in a low-cost, handheld device. It's a smart loop device that swaps the source and destination addresses in MAC and IP headers and is compatible with our ParaScope GigE, EZtouch GigE and EZtouch GigE+.

---



## *Main Features*

- Portable, lightweight yet rugged water proof device
- 10/100/1000Base-T RJ-45 Port
- 100/1000Base-X SFP port
- Supports full rate loopback for layer 1,2, 3 and 4
- Two-keys to perform all loopback operations
- IP Ping, Traceroute for Layer 3 connectivity test.
- Supports all carrier Ethernet validation tests: RFC-2544, Bit error rate (BER) and QoS
- Supports smart loopback as per different layer Rx Data
- Supports Key and Remote Web operation modes. IP PING test for xDSL and LAN indicates PING latency with min/max/avg results
- Compatible with end-to-end testing with ParaScope GigE, EZtouch GigE and EZtouch GigE+.

Frederick Engineering, Inc.  
832 Oregon Avenue, Suite M  
Linthicum, MD 21090



Phone: 410-789-7890  
Fax: 410-789-7670  
e-Mail: fe@fetest.com

[www.fetest.com](http://www.fetest.com)

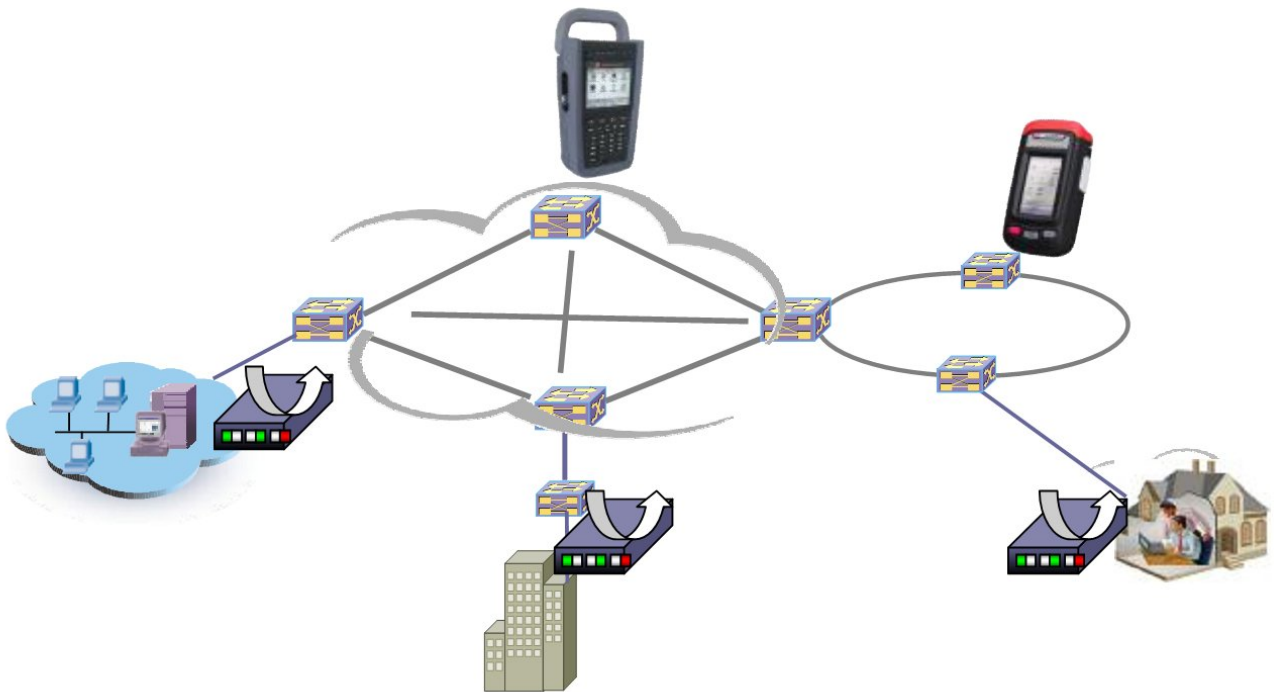
---

# Applications

When Ethernet and IP traffic passes through a switch or router, the source and destination addresses are checked and used for directing the traffic. Thus, a simple hard loop will not work as it did with T-carrier. The GigE Reflector is needed to swap the source and destination addresses in the MAC and IP headers.

With one of our standard Ethernet test sets on one end of an Ethernet circuit and the GigE Reflector on the other end, a technician can qualify the bit error rate, QoS and much more.

The GigE Loopback device allows the specified Ethernet port to loopback incoming Ethernet frames on layer 1,2,3 or 4 back to the sender for end-to-end testing.



# Specifications

Item	Description
Ports	10/100/1000Base-T 100/1000Base-X
Display	Keys and Remote Control
Operating/Storage Temperature	-10C – 50C or 14F – 122F / -20C – 70C or -4F – 158F
Operating/Storage Humidity	10% – 90% / 5% – 95%
Dimensions	L×W×H: 4.84 x 4.25 x 1.04 (in) or 123 x 108 x 26.5 (mm)
Weight	.5KG or 1.1 lbs.

Frederick Engineering, Inc.  
832 Oregon Avenue, Suite M  
Linthicum, MD 21090



Phone: 410-789-7890  
Fax: 410-789-7670  
e-Mail: fe@fetest.com

[www.fetest.com](http://www.fetest.com)